

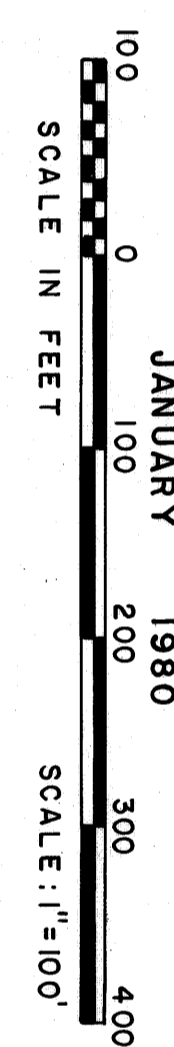
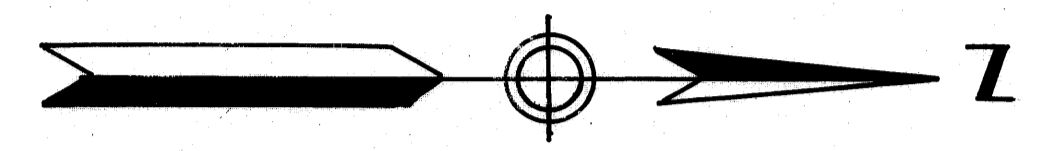
SHEET 3 OF 4

I, LOUISE V. ISAACS, Clerk of the CIRCUIT COURT of MARTIN COUNTY, FLORIDA, HEREBY CERTIFY that this PLAT was FILED for RECORD in PLAT BOOK 8 PAGE 77, MARTIN COUNTY FLORIDA, PUBLIC RECORDS, this day of _____, 1981.

LOUISE V. ISAACS
CLERK of the CIRCUIT COURT
MARTIN COUNTY FLORIDA

By: _____
Deputy Clerk

FILE NO. _____



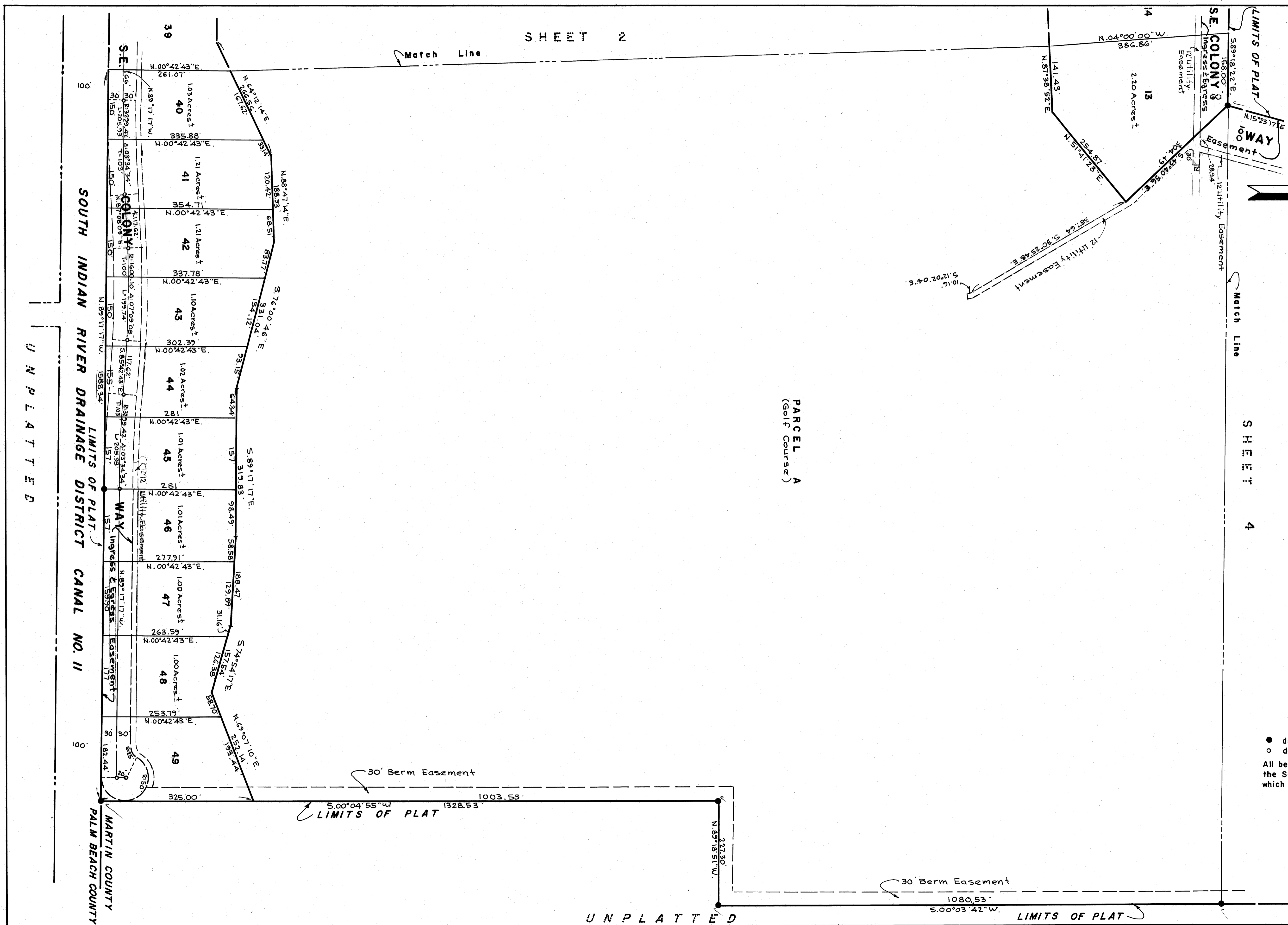
"THE LINKS"

IN PART OF SECTION 27, TWP. 40 S., RGE. 41 E.
MARTIN COUNTY, FLORIDA

GEE & JENSON
ENGINEERS-ARCHITECTS-PLANNERS, INC.
WEST PALM BEACH, FLORIDA
JANUARY 1980

NOTES

- denotes Permanent Reference Monument
 - denotes Permanent Control Point
- All bearings shown hereon are relative to the South Line of Section 27-40-41 which is assumed to bear N.89°17'17"W.



SHEET 2

SHEET 4